

Technical Specifications for Offline Cuts

All cuts submitted to YouTube must be formatted with the following specifications:

Timecode:

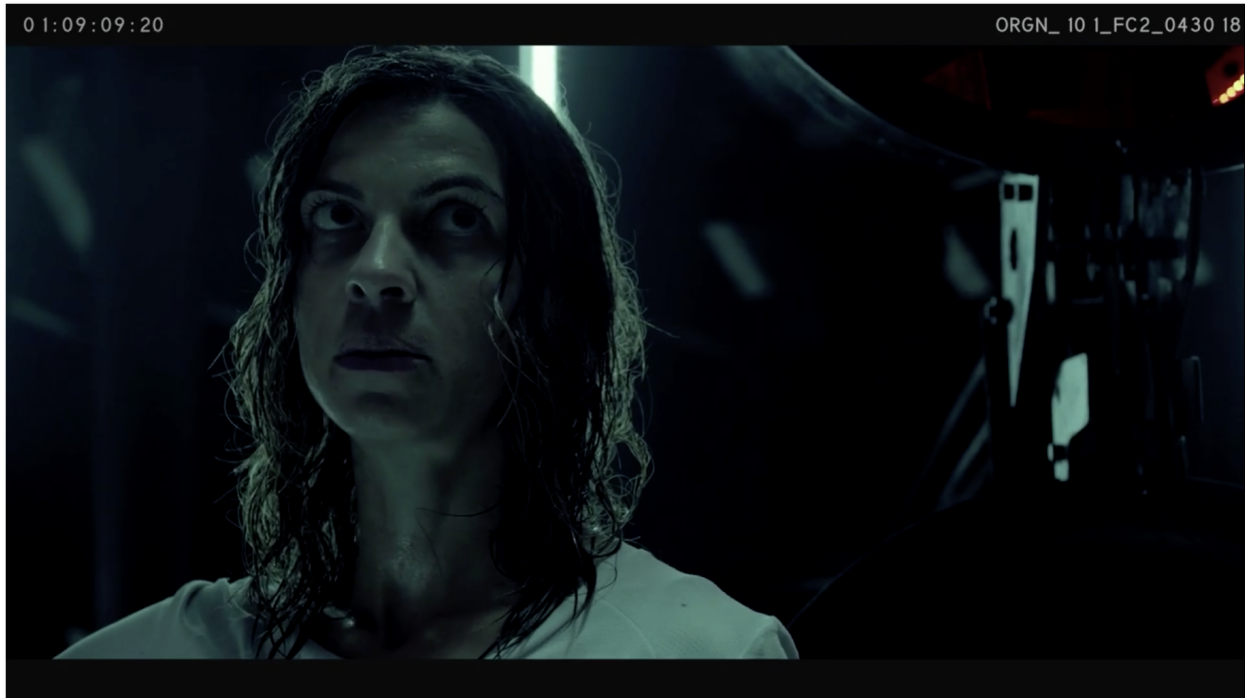
- Slate: 00:59:55:00 (3 seconds)
- Black: 00:59:58:00 (2 seconds)
- Start of Program: 1:00:00:00

Slate:

- Show Title (full name)
- Episode Number
- Version (eg: RC1, RC2, FC)
- Output Date
- TRT

Burn-in / Viz Timecode:

- A timecode burn-in must be added to all cuts. Size and location of burn-in should be formatted so it does not detract from any pertinent on-screen action (i.e. lower thirds).
- Please also include Show Abbreviation, Episodes #, Version, & Date. Example:



Video/Audio Specifications:

- Codec: H.264
- Data Rate: between 8,000 - 10,000 kbps
- Container: .mov or .mp4

Technical Specifications for Offline Cuts

- Frame Size: 1920x1080
- Aspect Ratio: 16x9
- Frame Rate: Native
- Mono/Stereo AAC, 128 kbps

File Naming:

- [SHOW-ABBREVIATION]_[EPISODE#]_[VERSION]_[DATE].MOV
Ex: RLBS_102_RC_072216.mov
- All cuts must be uploaded to YouTube's Frame.io account. Refer to the [Frame.io Uploading and Sharing Assets](#) article for uploading and sharing instructions.
- When sharing assets, you must include **Show Title**, **Asset Description** and **Deadline for Notes** in the subject line of email, i.e: **Origin Ep 101 Fine Cut 2 - Notes Due Wednesday, 2nd of May, 9am PST**
- *If applicable, include any notes/comments on the current status of the cuts.*

International Programs

- All programs in another language other than English must include burned-in English subtitles on all offline review cuts. Please factor in time and budget for this requirement.

Continuity Sheets / Logs (Scripted series / features only)

- A continuity sheet is required with each cut. Example [here](#).
- Continuity sheets must include:
 - Writer(s), Director(s), Editor(s)
 - Show Title
 - Episode Number and Title
 - Cut Version
 - Output Date
 - Current TRT
 - Scene Number
 - Location
 - Description
 - Notes
 - If scene contains music to be licensed, provide the detailed list of tracks
 - Scenes Omitted
 - List all scenes that have been cut out and note as "Omit"

Audio Splits / Stems

- Matching audio splits/stems are required at the time of delivery of ALL CUTS
- Required elements:
 - Dialogue

Technical Specifications for Offline Cuts

- Music
- Effects
- VO
 - Deliver as separate stereo tracks for each element
 - Uncompressed .wavs or .aiff files
- Upload the splits to the '**Audio Splits**' folder within your Frame.io project. These must be delivered at the same time cuts are delivered.

YouTube Reserves The Right To Reject A Cut

- ROUGH CUT (RC) is 7 or more minutes over minimum TRT
- Any cut after RC2 is missing over 20% of sound bites, b-roll, establishing shots, etc.
- Any cut is missing any scene
- Any of the prior notes given in a previous cut have not been addressed
- All notes must be addressed on the LC prior to moving into master delivery
- BURN-IN Timecode is not present
- Any of the post guidelines are not met

YTO Notes Turnaround Times

- Unless pre-approved, all U.S. and Canada programs must allow for two (2) business days for notes turnaround on ALL cuts.
 - Ex. If cut lands on Friday 9am PST, then YTO notes are due Tuesday 9am PST.
- Unless pre-approved, all International programs must allow for three (3) business days for YTO notes turnaround on ALL cuts.
 - Ex. If cut lands on Tuesday 9am PST, then YTO notes are due Friday 9am PST.

• IMPORTANT

- *Please contact your YTO Post Manager ahead of any deliveries if you have any questions on the above specs.*
- *Cuts received after 9am PST are deemed received on the following business day, and the 48 hour notes turnaround starts the following day at 9am PST.*
- *If more than (2) cuts are delivered in a day, an additional 24 business hours for notes is required on each additional cut.*
- *No more than (3) cuts per week (if TRT is > :30min), or (4) cuts per week (if :30min or less) can be delivered without prior approval.*